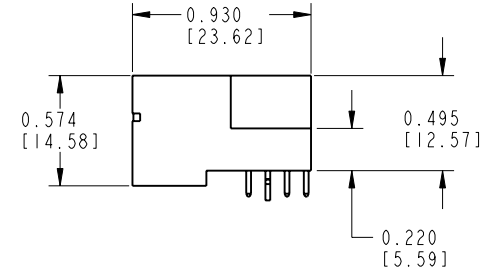
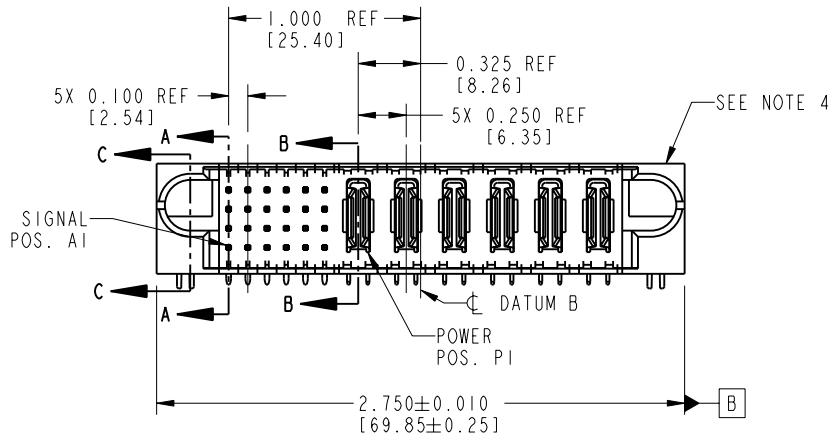


Tous droits strictement réservés. Reproduction ou communication ou des liens interdite sous quelque forme que ce soit sans autorisation écrite du propriétaire. Propriété de c FCI. Droits de reproduction FCI.

All rights strictly reserved. Reproduction or issue to third parties in any form whenever is not permitted without written authority from the proprietor. Property of FCI. Copyright FCI.

FCI

PRODUCT NO.	ROWS	SIG						POWER																			
		E1	1	2	3	4	5	6	P1	P2	P3	P4	P5	P6	E2												
51731-014-- NOTE: 3	D C B A	H	H	H	H	U	U	U	U	U	U	U	U	U	U	PA	PA	PA	PA	PA	PA	PA	PA	PA	PA	H	H



CODE	DIM "M" MATING LENGTH	CONTACT TYPE
E	0.220 [5.59]	SIGNAL
R	0.270 [6.86]	SIGNAL
S	0.270 [6.86]	SIGNAL
T	0.270 [6.86]	SIGNAL
U	0.270 [6.86]	SIGNAL
PA	N/A [N/A]	POWER
H	0.220 [5.59]	SIGNAL
G	0.220 [5.59]	SIGNAL
F	0.220 [5.59]	SIGNAL
HA	N/A [N/A]	HOLD-DOWN

mat'l code				SEE NOTE 2		tolerances unless otherwise specified		CUSTOMER		FCI www.fciconnect.com	
ltr	ecn no.	dr	date	linear	.XX±.01/0.X±0.3		COPY		title		
A	V03-0063	MEM	1/15/03		.XXX±.005/0.XX±0.13		projection		24S + 6P		
B	DG05-0458	GuoJM	11/19/05		.XXX±.0020/0.XXX±0.051		INCH/MM		RIGHT ANGLE SOLDER HEADER		
				angles	0° ± 2°		scale		product family		code
				dr	M. MOSTOLLER	1/15/03	1:1		PwrBlade		213
				engr	M. MOSTOLLER	1/15/03			size		sheet
				chr	H. BREWBAKER	1/15/03			dwg no		1 of 4
				appd	M. MOSTOLLER	1/15/03			A 51731-014		
sheet index	revision sheet	B	B	B	B						
		1	2	3	4						

Pro/E

cage code 22526

PDM: Rev:B

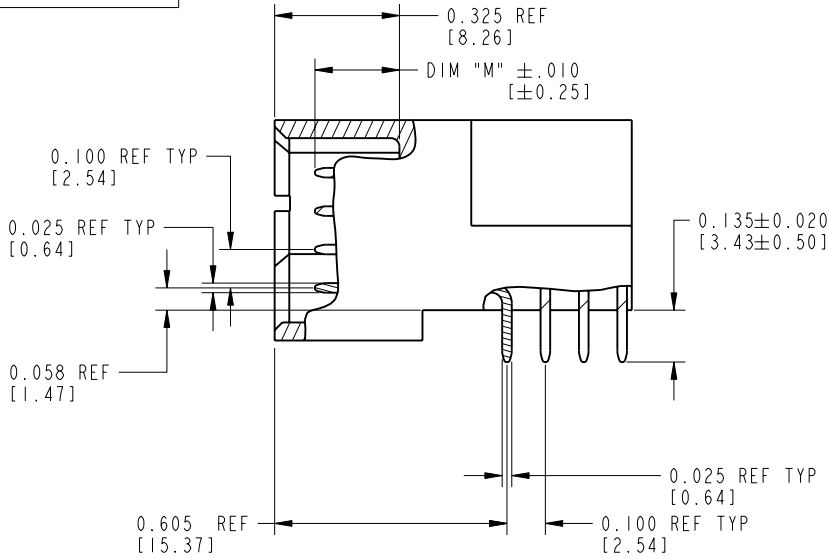
STATUS: Released

Printed: Aug 13, 2007

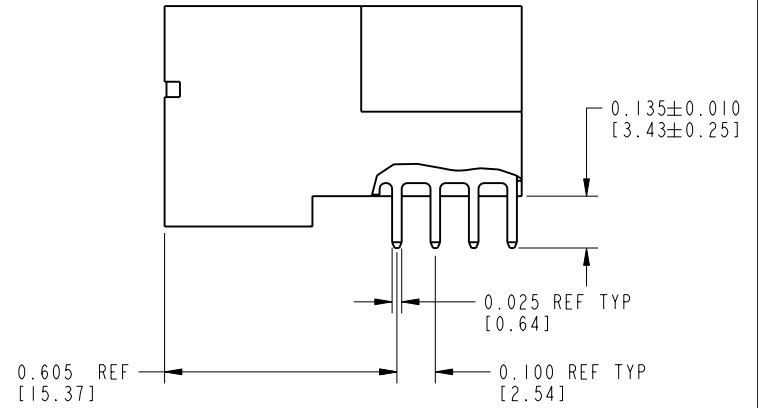
Tous droits strictement réservés. Reproduction ou communication o des liens interdite sous quelque forme que ce soit sans autorisation écrite du propriétaire. Propriété de c FCI. Droits de reproduction FCI.

All rights strictly reserved. Reproduction or issue to third parties in any form, whatever is not permitted without written authority from the proprietor. Property of FCI. Copyright FCI.

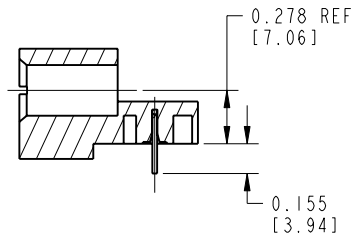
PRODUCT NUMBER
51731-014__
NOTE: 3



BROKEN-OUT SECTION A-A
SCALE 2:1



BROKEN-OUT SECTION B-B
SCALE 2:1



SECTION C-C

mat'l code				SEE NOTE 2		tolerances unless otherwise specified		CUSTOMER		 www.fciconnect.com	
lfr	ecn no.	dr	date	linear	.XX±.01/0.X±0.3	projection	COPY		title		
B				angles	.XXX±.005/0.XX±0.13		INCH/MM		24S + 6P		
				dr	.XXX±.0020/0.XXX±0.051		scale		RIGHT ANGLE SOLDER HEADER		
				engr	0°±2°	1/15/03	1:1		product family		code
				chr	M. MOSTOLLER	1/15/03			PwrBlade		213
				appd	M. MOSTOLLER	1/15/03			size		sheet
					H. BREWBAKER	1/15/03			A		2 of 4
					M. MOSTOLLER	1/15/03			51731-014		
sheet index	revision sheet										

Pro/E

cage code 22526

PDM: Rev:B

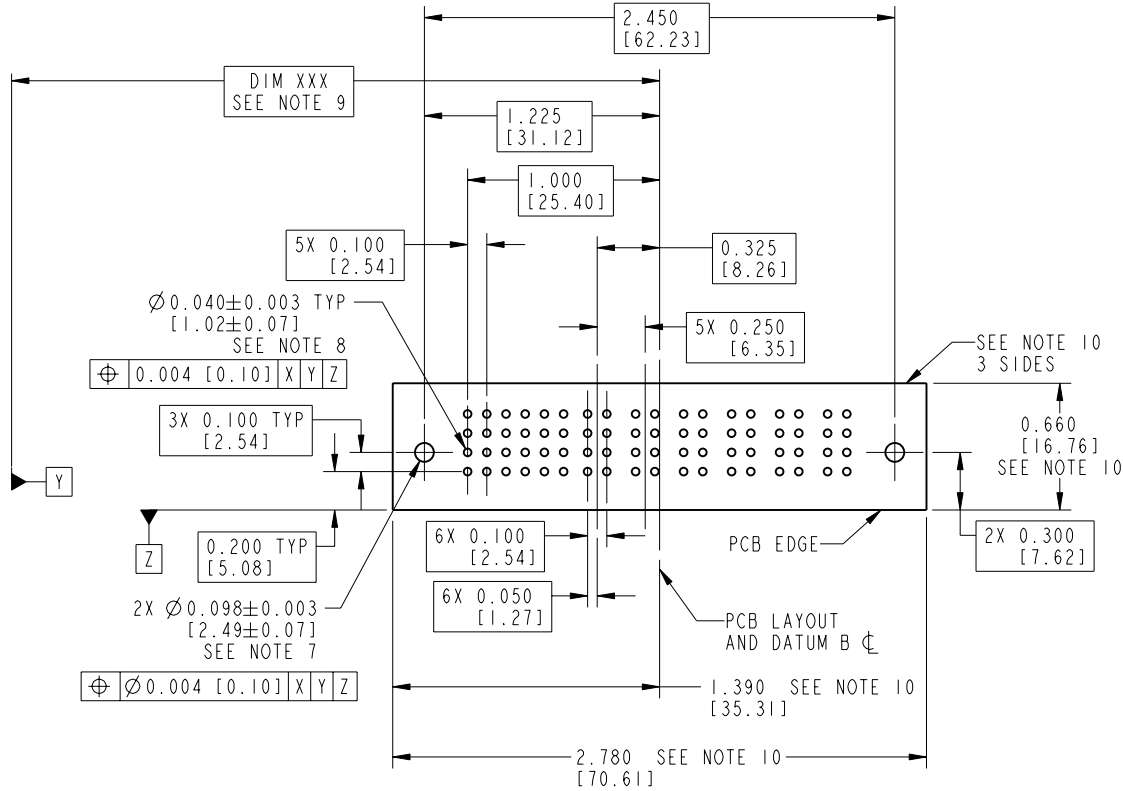
STATUS: Released

Printed: Aug 13, 2007

Tous droits strictement réservés. Reproduction ou communication o des liers interdite sous quelque forme que ce soit sans autorisation écrite du propriétaire. Propriété de c FCI. Droits de reproduction FCI.

All rights strictly reserved. Reproduction or issue to third parties in any form, whenever is not permitted without written authority from the proprietor. Property of FCI. Copyright FCI.

PRODUCT NUMBER
51731-014__
NOTE: 3



RECOMMENDED PCB LAYOUT

mat'l code		SEE NOTE 2		tolerances unless otherwise specified		CUSTOMER		 www.fciconnect.com	
lfr	ecr no.	dr	date	linear	.XX ± .01 / 0.X ± 0.3	COPY		title	
B				angles	.XXX ± .005 / 0.XX ± 0.13	projection		24S + 6P	
				dr	.XXX ± .0020 / 0.XX ± 0.051			RIGHT ANGLE SOLDER HEADER	
				engr	M. MOSTOLLER 1/15/03	INCH/MM		product family	
				chr	M. MOSTOLLER 1/15/03	scale		PwrBlade	
				appd	H. BREWBAKER 1/15/03	1:1		code	
					M. MOSTOLLER 1/15/03			213	
sheet index	revision sheet							size	
								dwg no	
								A 51731-014	
								sheet	
								3 of 4	

cage code 22526

Pro/E

PDM: Rev:B

STATUS: Released

Printed: Aug 13, 2007

Tous droits strictement réservés. Reproduction ou communication o des liers interdite sous quelque forme que ce soit sans autorisation écrite du propriétaire. Propriete de c FCI. Droits de reproduction FCI.

FCI

All rights strictly reserved. Reproduction or issue to third parties in any form, whatever is not permitted without written authority from the proprietor. Property of FCI. Copyright FCI.

1 | 2

3 |

4

PRODUCT NUMBER

51731-014__
NOTE: 3

NOTES:

1. DIMENSIONS AND TOLERANCES ARE IN ACCORDANCE WITH ASME Y14.5M, 1994 UNLESS OTHERWISE SPECIFIED.

CONNECTOR NOTES:

2. HOUSING MATERIAL: UL 94 V-0 GLASS FILLED

HIGH-TEMP THERMOPLASTIC
POWER CONTACT MATERIAL: COPPER ALLOY
SIGNAL PIN MATERIAL: COPPER ALLOY

3. PLATING:

51731-014 Singal Pin:30u"/0.76um Au OVER 50u"/1.27um Ni ON THE CONTACT AREA.
AND 100u"/2.54um SnPb PLATING OVER 50u"/1.27um Ni ON THE TERMINATION SECTION.
Power Pin:30u"/0.76um Au OVER 50u"/1.27um Ni ON THE CONTACT AREA,
AND 100u"/2.54um SnPb PLATING OVER 50u"/1.27um Ni ON THE TERMINATION SECTION.

51731-014LF Singal Pin:30u"/0.76um Au OVER 50u"/1.27um Ni ON THE CONTACT AREA.
AND 78u"/2.00um Sn PLATING OVER 50u"/1.27um Ni ON THE TERMINATION SECTION.
Power Pin:30u"/0.76um Au OVER 50u"/1.27um Ni ON THE CONTACT AREA,
AND 78u"/2.00um Sn PLATING OVER 50u"/1.27um Ni ON THE TERMINATION SECTION.

PART NUMBER 51731-014LF MEETS EUROPEAN UNION DIRECTIVE AND OTHER ICOUNTRY REGULATIONS AS DESCRIBED IN GS-22-008.

THE HOUSING WILL WITHSTAND EXPOSURE TO 260° PEAK TEMPERATURE FOR 10 SECONDS IN A WAVE SOLDER APPLICATION WITH A CIRCUIT BOARD.

4. MANUFACTURER'S NAME, P/N, AND DATE CODE TO APPEAR ON THIS SURFACE.

5. PRODUCT SPECIFICATION GS-12-149.
APPLICATION SPECIFICATION BUS-20-067.
PACKAGED IN TRAYS.

PCB NOTES:

6. ALL HOLE DIAMETERS ARE FINISHED HOLE SIZE.


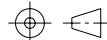

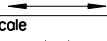
7. MOUNTING HOLES, WHERE APPLICABLE, ARE UNPLATED.

8. Ø.0453±.0010 [1.151±0.025] DRILLED HOLES PLATED WITH

.0003 [0.008] MIN SnPb OVER .001 [0.03]
TO .003 [0.08] Cu PLATING TO ACHIEVE
Ø.040±.003 [1.02±.07] HOLE.

9. "DIM XXX" TO BE DETERMINED BY THE CUSTOMER.

10. CONNECTOR KEEP-OUT ZONE.

mat'l code		SEE NOTE 2		tolerances unless otherwise specified		CUSTOMER		 FCI www.fciconnect.com	
lfr	ecr no.	dr	date	linear	.XX±.01/0.X±0.3	COPY			
B				projection	.XXX±.005/0.XX±0.13			title 24S + 6P	
				angles	.XXX±.0020/0.XXX±0.051			RIGHT ANGLE SOLDER HEADER	
				dr	M. MOSTOLLER 1/15/03	INCH/MM		product family PwrBlade code	
				engr	M. MOSTOLLER 1/15/03			size 213	
				chr	H. BREWBAKER 1/15/03	scale 1:1		sheet	
				appd	M. MOSTOLLER 1/15/03			4 of 4	
sheet index		revision sheet							

1 | 2

Pro/E

3 |

cage code 22526

4